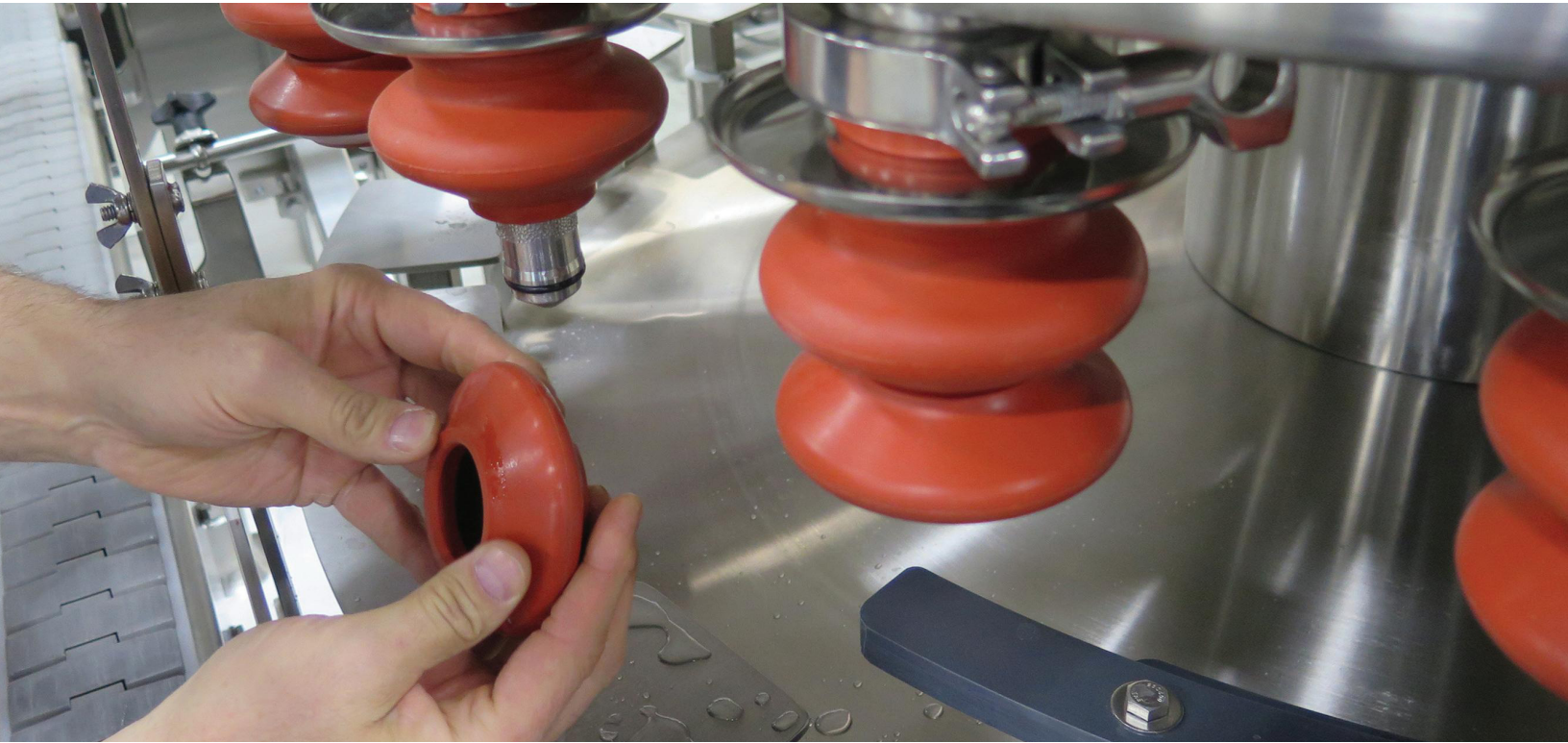




F&C

**FILLING &
CAPPING**

PMSP PROACTIVE MAINTENANCE SERVICE PROGRAMS



Keep your Federal fillers running at rated speeds with OEM service, training and parts

Federal offers Proactive Maintenance Service Programs (PMSP) to help filler operators and maintenance personnel keep their Federal fillers running at rated speeds and at target quality standards.

PMSP HIGHLIGHTS

- Annual, semi-annual or quarterly visits by highly trained and experienced Federal Field Service Engineers
- Visits scheduled in advance to accommodate each plant's needs
- Visit duration based on number of fillers and plant requirements
- Programs easily customized
- Discounted labor rates
- No-charge floating days

ADDITIONAL HIGHLIGHTS

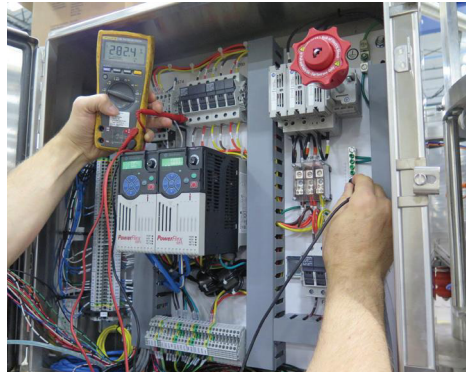
- OEM parts discount
- Fixed, flat-rate travel time and travel expenses
- PMSP service visits scheduled at least thirty days in advance have guaranteed availability of a Federal Field Service Engineer
- All service provided by highly trained and experienced Federal Field Service Engineers
- Visits scheduled at least thirty (30) days prior to arrival
- Programs designed to fit every budget

ADDITIONAL HIGHLIGHTS

- No-charge floating days help address the need to extend a visit
- Predetermined and fixed travel time and travel expenses makes budget management easy
- Monthly invoicing option helps spread expense evenly throughout budget year

WHAT SERVICES CAN BE PERFORMED DURING A VISIT?

- Filler audits including a written assessment
- Scheduled preventative maintenance
- Filler trouble shooting and repair
- Installation of purchased OEM parts including container handling parts
- Training
- Hands-on coaching
- Parts inventory review and safety stock recommendations



WHY PROACTIVE MAINTENANCE?

- Routine training and interaction with Federal Field Service Engineers helps personnel trouble shoot and resolve small issues before they become bigger problems
- Proactively maintaining a filler is less expensive than running it until it fails and then fixing it
- Bottom line focus on increasing productivity and maintaining filling quality
- Extends the useful life of a valuable capital asset
- Pays for itself by helping achieve and maintain rated speeds and filling quality
- Adds highly skilled know-how to your team without adding to head count